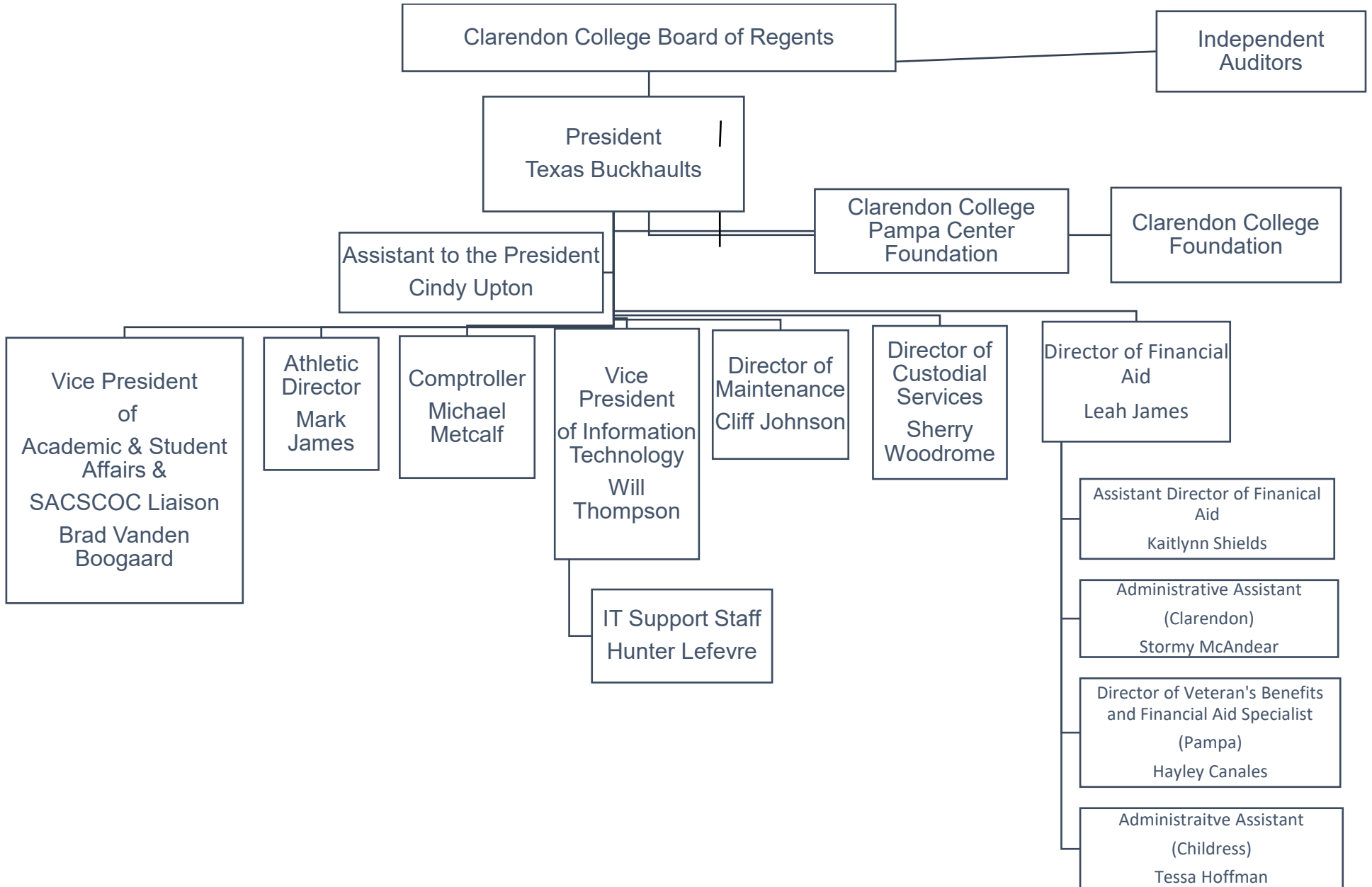


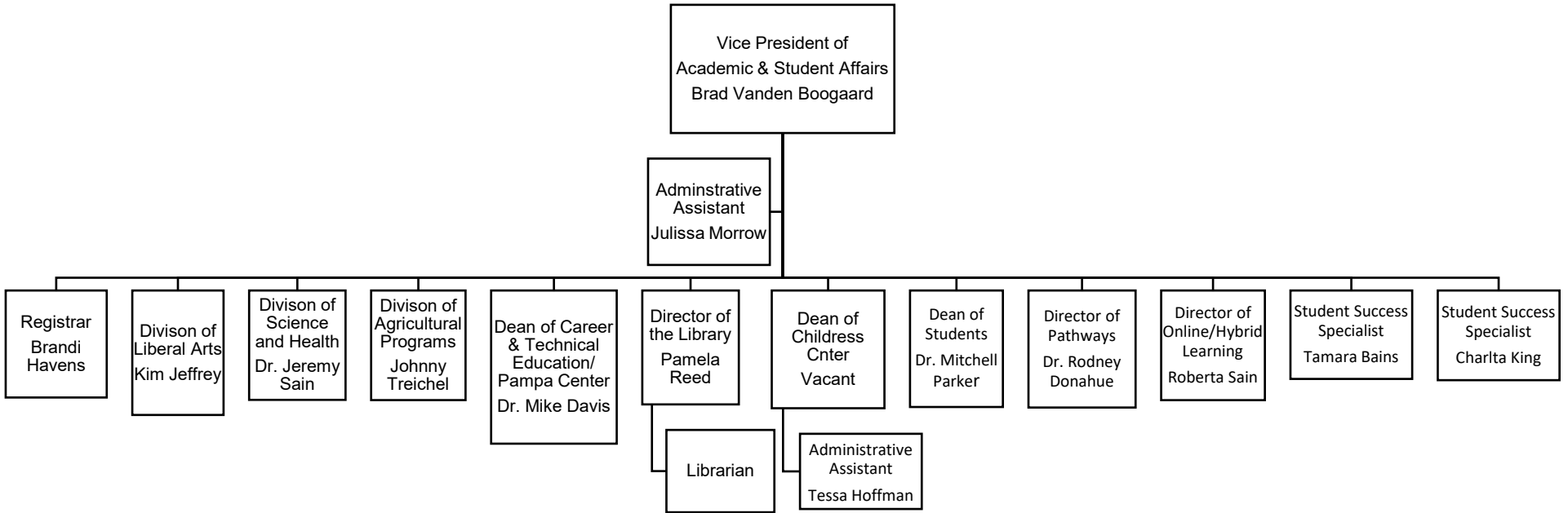
APPENDIX A

Clarendon College Organizational Charts

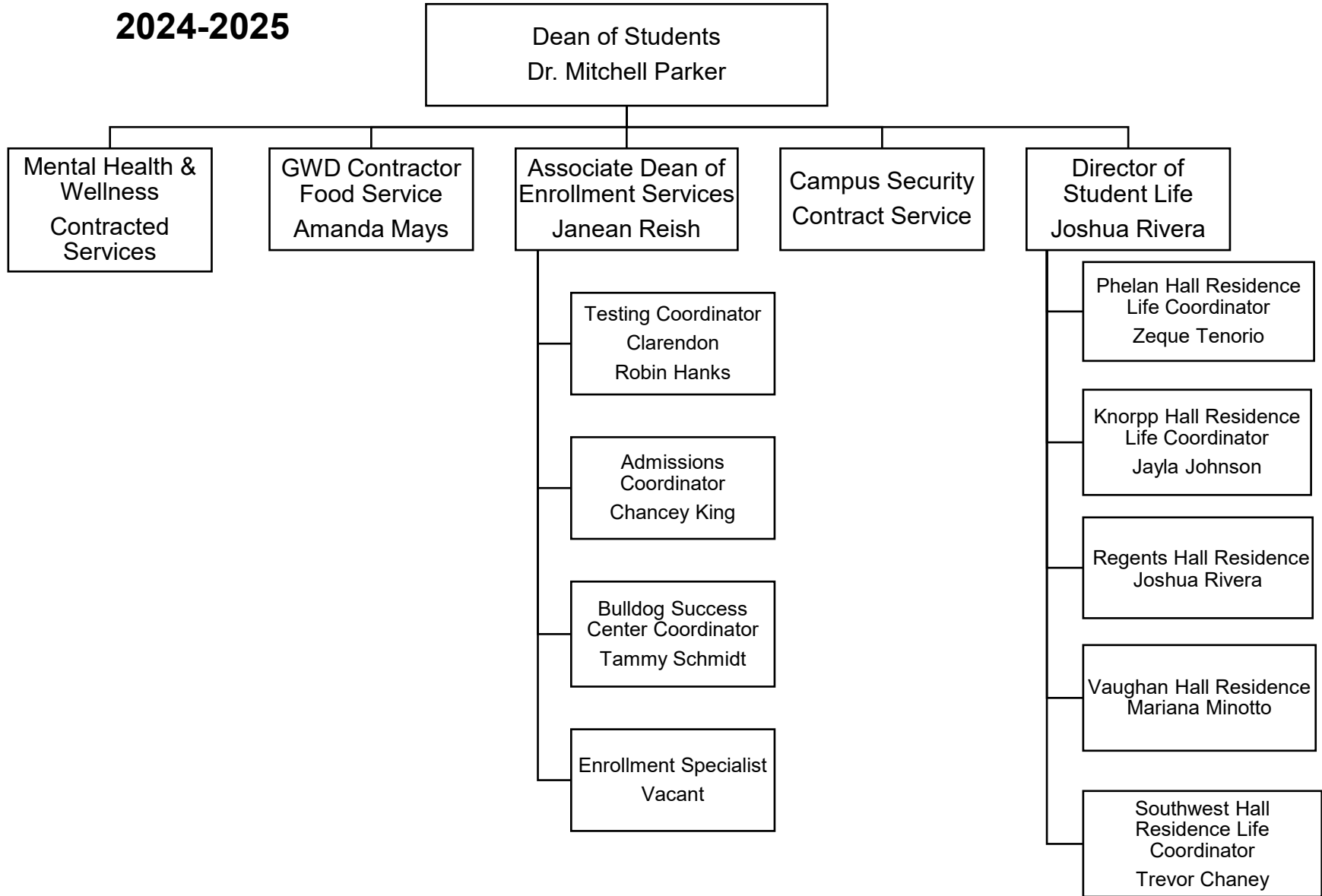
Clarendon College Organizational Chart 2024-2025



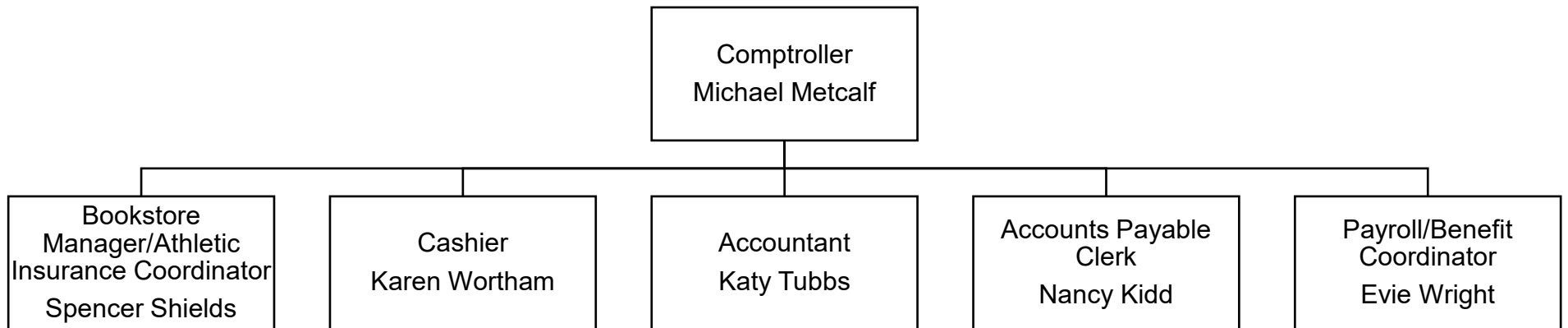
Clarendon College Organizational Chart For Academic Affairs 2024-2025



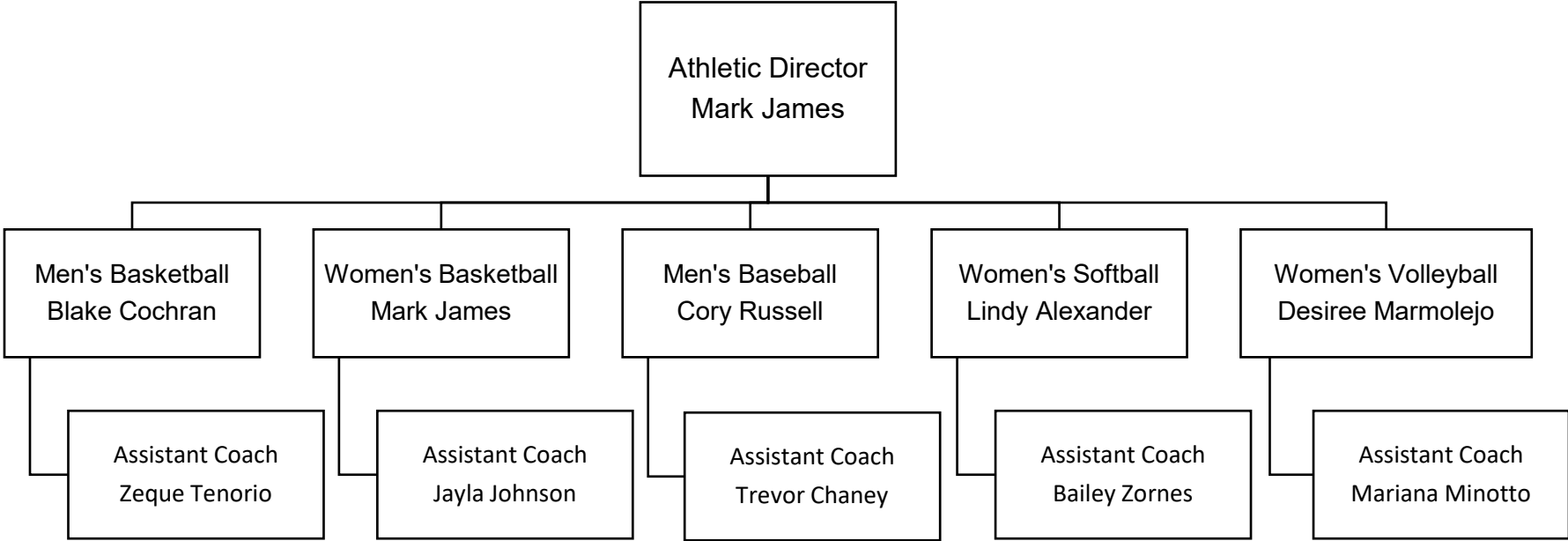
Clarendon College Organizational Chart For Student Affairs 2024-2025



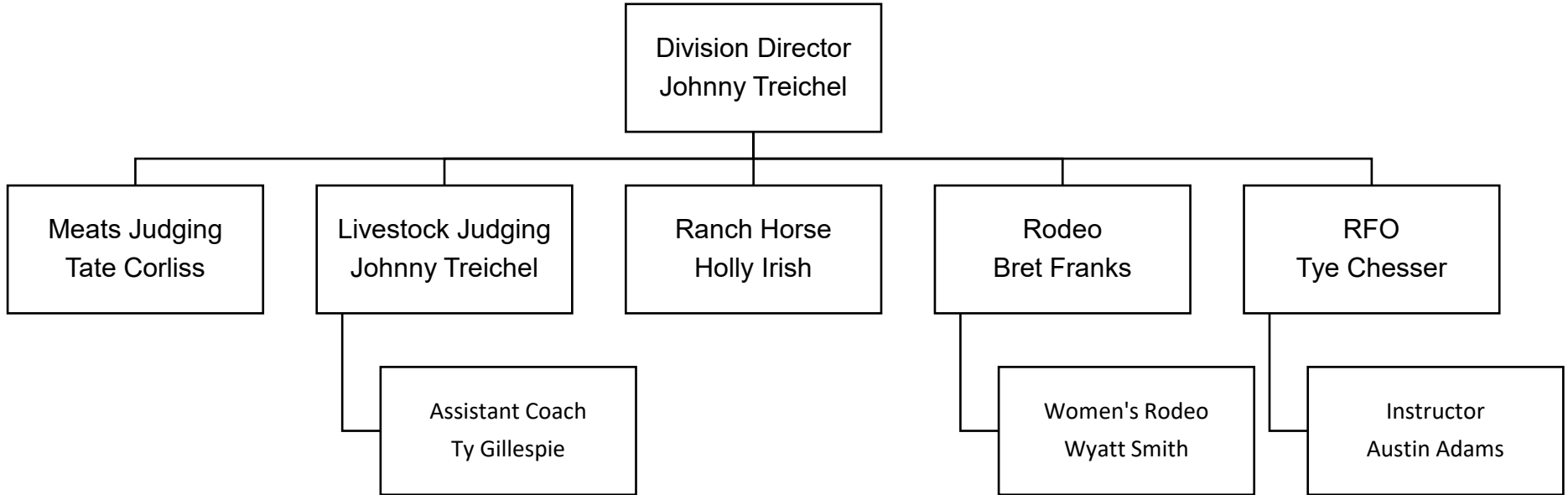
**Clarendon College
Organizational Chart
For Administrative Services
2024-2025**



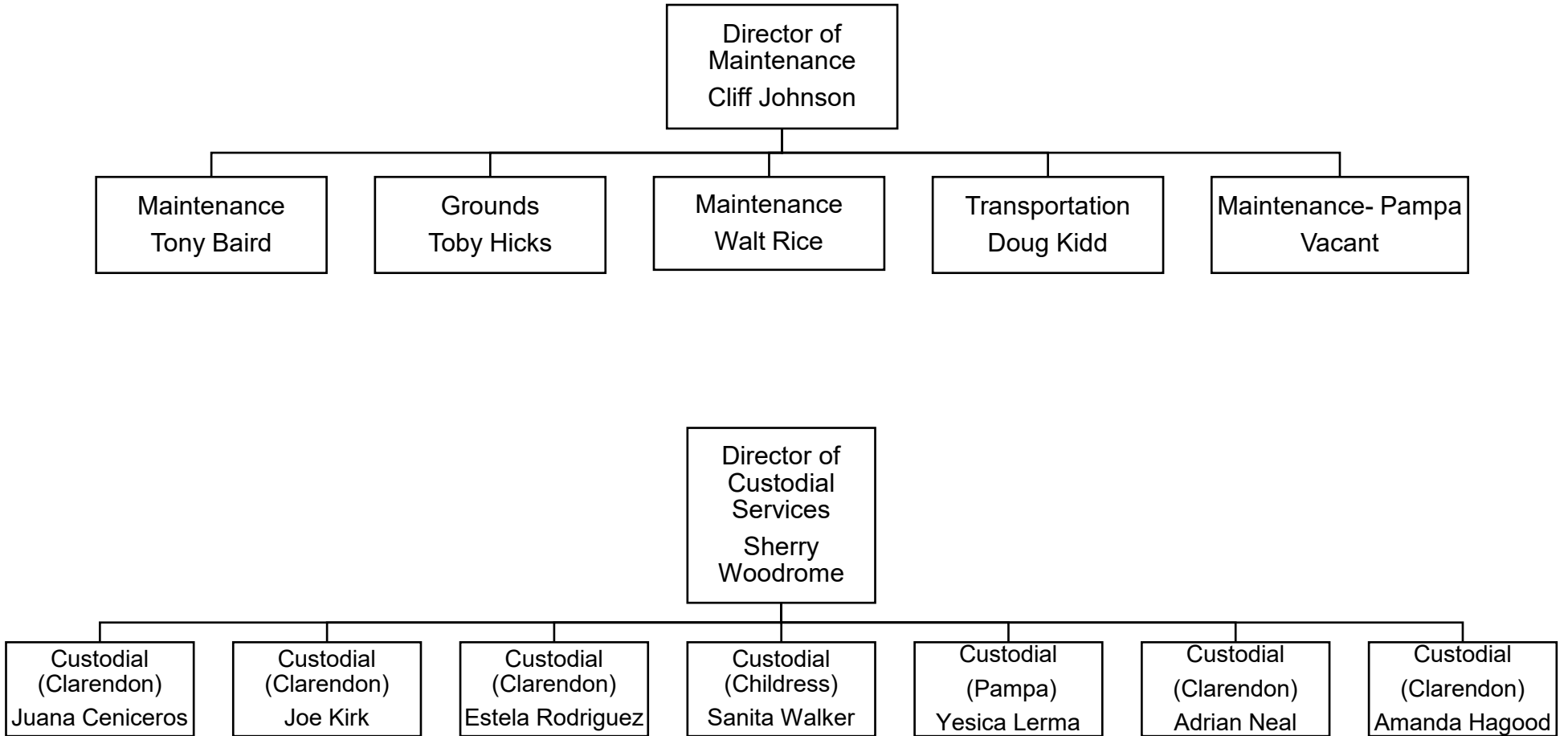
**Clarendon College
Organizational Chart
For Athletics
2024-2025**



**Clarendon College
Organizational Chart
For Agricultural Programs
2024-2025**

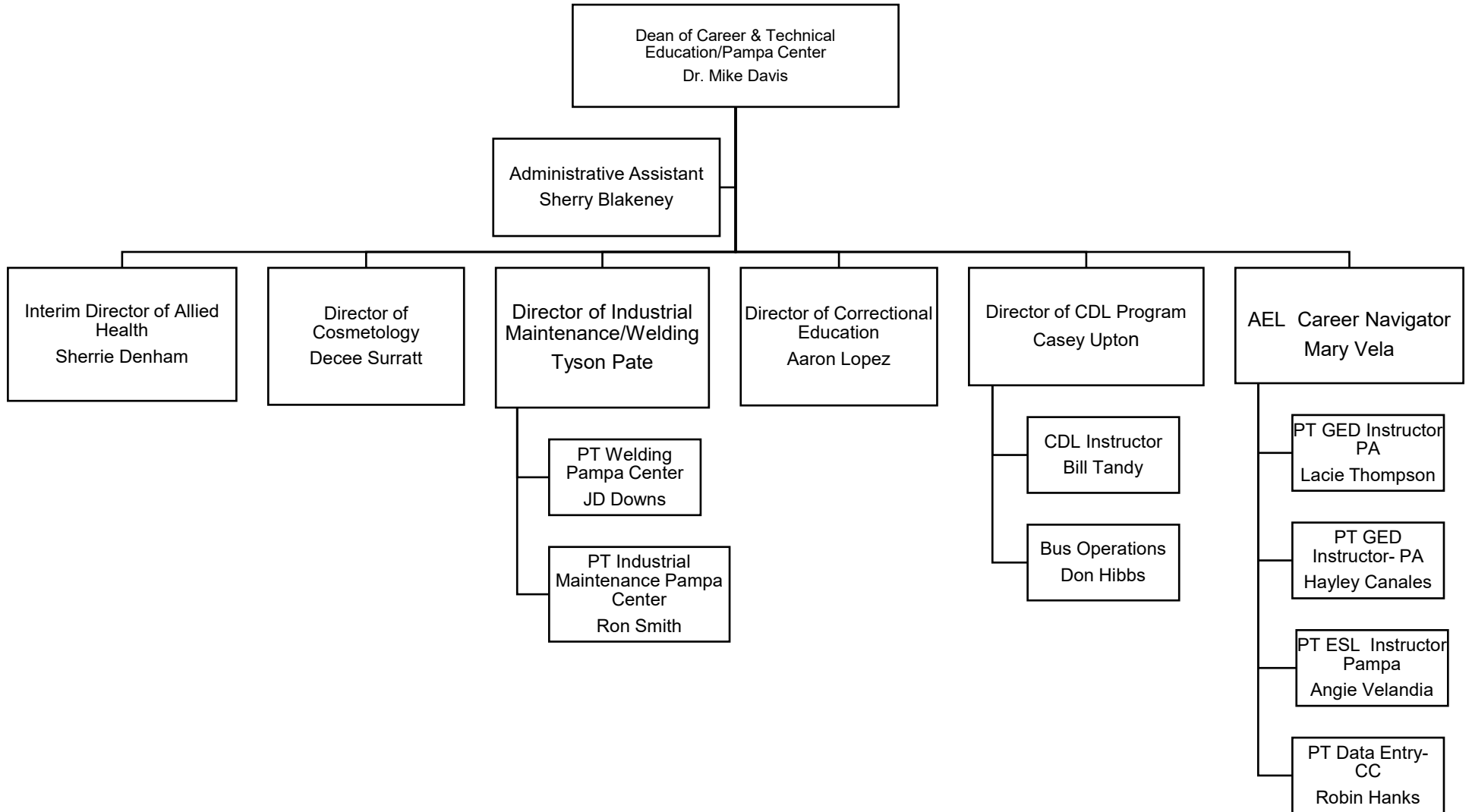


**Clarendon College
Organizational Chart
For Maintenance/Custodial
2024-2025**



Clarendon College Organizational Chart

2024-2025



Clarendon College Organizational Chart For Allied Health 2024-2025

Interim Director of Allied Health
Sherrie Denham

Administrative Assistant
Beth Rice

